

Networking Servers made for BSD and Linux systems





NETMAP L-800





NETMAP L-800

high-end IU rack networking server for mission critical operations

NETMAP L-800



NETMAP L-800



NETMAP L-800

- ServerU Netmap L-800 is **our best offer** for an embedded network-centric appliance at **High End** class
- This device was specially designed for **mission-critical** high-performance and high-availability operations on big and medium business' companies
- Powered by default with 6 Intel Gigabit Server network cards with multiple multithreaded independent queues
- MSI-X interrupt control, ready for Netmap technology which provides high performance packet capturing and processing



NETMAP L-800

- Powered by **igb(4)** device driver and Intel Server networking cards on every 1000BaseT ethernet port.
- Up to 16GB RAM (4GB default) and 8 Intel High End embedded processor cores
- It's a networking server suitable for **up to 5.6Gbit/s** and **2.7Mpps** aggregate throughput.
- **3 bypass segments:** on system *power down*, *kernel failure* or *long duration unresponsiveness*, all 6 ports will, in 3 pairs, allow traffic to pass by; perfect for bridged operations, including firewall, IDS/IPS, traffic interception and other applications when **availability** upon system failure is of critical importance




NETMAP L-800

KEY FEATURES

- 6 NICs w/ Intel igb(4) driver
- Hand-picked server chipsets
- Netmap Ready (FreeBSD & pfSense)
- Up to 14 Gigabit expansion ports
- Up to 2x10GbE SFP+ expansion
- 3 bypass segments (fail-safe operations)

PERFECT FOR

- BGP & OSPF routing
- Firewall & UTM Security Appliances
- Intrusion Detection Systems
- WAF (Web Application Firewall)
- CDN & Web Cache / Proxy
- E-mail Server & SMTP Filtering

Server 



NETMAP L-800



TECHNICAL OVERVIEW

Here is a summary description for ServerU Netmap L-800

Business Size:	For big and medium sized business
Recommended use:	BGPv4 & OSPF Routing, Stateful Firewall, IDS/IPS, Web App Firewall, CDN, Caching Proxy
Recommended use:	Web Proxy & Content Filtering, Web Hosting, E-mail Gateway, E-mail Server, SMTP Firewall & VPN
Designed & tested for:	ProApps, FreeBSD, pfSense, OpenBSD, Linux, Vyatta, Endian & Mikrotik (no Windows)
Certifications:	FCC Class A, UL, RoHS, CE Emission, ANATEL
Processor:	Intel® C2758 "Rangeley" 8x2.41 Ghz (Octa Core) Embedded w/ SMT support - 16 SMT cores
Chipset:	Intel® "Rangeley" w/ VT-x virtualization support;
Memory Technology:	1x 4GB DDR3 on 240P DIMM socket (up to 16GB on 2x240P DDR3 DIMM)
Network Interfaces:	6x Intel Gigabit server ports w/ 2x Intel i210AT chipset and 4x Intel 88E1543 chipset - igb(4) driver
Network Features:	All 3 segments with full 3rd generation bypass support; WDT, RTC, MSI-X, CPU Affinity w/ 4 and 8 Qs
Physical I/O:	4-key Pad & 2-line LCM Display (fully scriptable yeah!)



NETMAP L-800



TECHNICAL OVERVIEW

Here is a summary description for ServerU Netmap L-800

Defense in Depth:	Perfect for bastion Host, Tier-1, Tier-2 and Tier-3 perimeter control
Diversity of Defense:	FreeBSD, Linux or OpenBSD; ProApps, pfSense or Mikrotik;
Fail Safe:	3rd generation Intel Bypass technology (power or system failure)

NETMAP L-800



1 Gbit/s Copper	Ports	Chipset	Bypass
L800-G808-1	8x Gbe RJ-45 ports	8x Intel i210 AT; PEX8618	4 pairs G3
L800-G808-2	8x Gbe RJ-45 ports	8x Intel i210 AT; PEX8618	N/A
L800-G428-1	4x Gbe RJ-45 ports	1x Intel i350 AM4	2 pairs G3
L800-G428-2	4x Gbe RJ-45 ports	1x Intel i350 AM4	N/A
1 Gbit/s SFP (Fiber)	Ports	Chipset	Bypass
L800-S406-1	4x Gbe SFP ports	i350-AM4	N/A
10GbE Copper	Ports	Chipset	Bypass
L800-T202-1	2x 10Gbe RJ-45 ports	Intel X540	N/A
L800-T203-1	2x 10Gbe RJ-45 ports	Intel X540	1 pair G3
10GbE SFP+ (Fiber)	Ports	Chipset	Bypass
L800-X204-1	2x 10Gbe SFP+	Intel 82599ES	N/A
L800-X205-1	2x 10Gbe SFP+	Intel 82599ES	10G Fiber
L800-X405-1	4x 10Gbe SFP+	Intel 82599ES; PEX8724	N/A

- With a PCIe x8 3rd Generation NIC expansion slot w/ high bandwidth bus, ServerU Netmap L-800 can be grown in performance, bandwidth and perimeter ports according to your needs
- These front-facing and easily swapped modules allow for a safe and guaranteed expansion for NICs of type RJ-45 copper, fiber, bypass and speeds from 1 Gb/s to 10Gb/s (SFP, SFP+ and Copper).



1 Gbit/s Copper

L800-G808-1

L800-G808-2

L800-G428-1

L800-G428-2

1 Gbit/s SFP (Fiber)

L800-S406-1

10GbE Copper

L800-T202-1

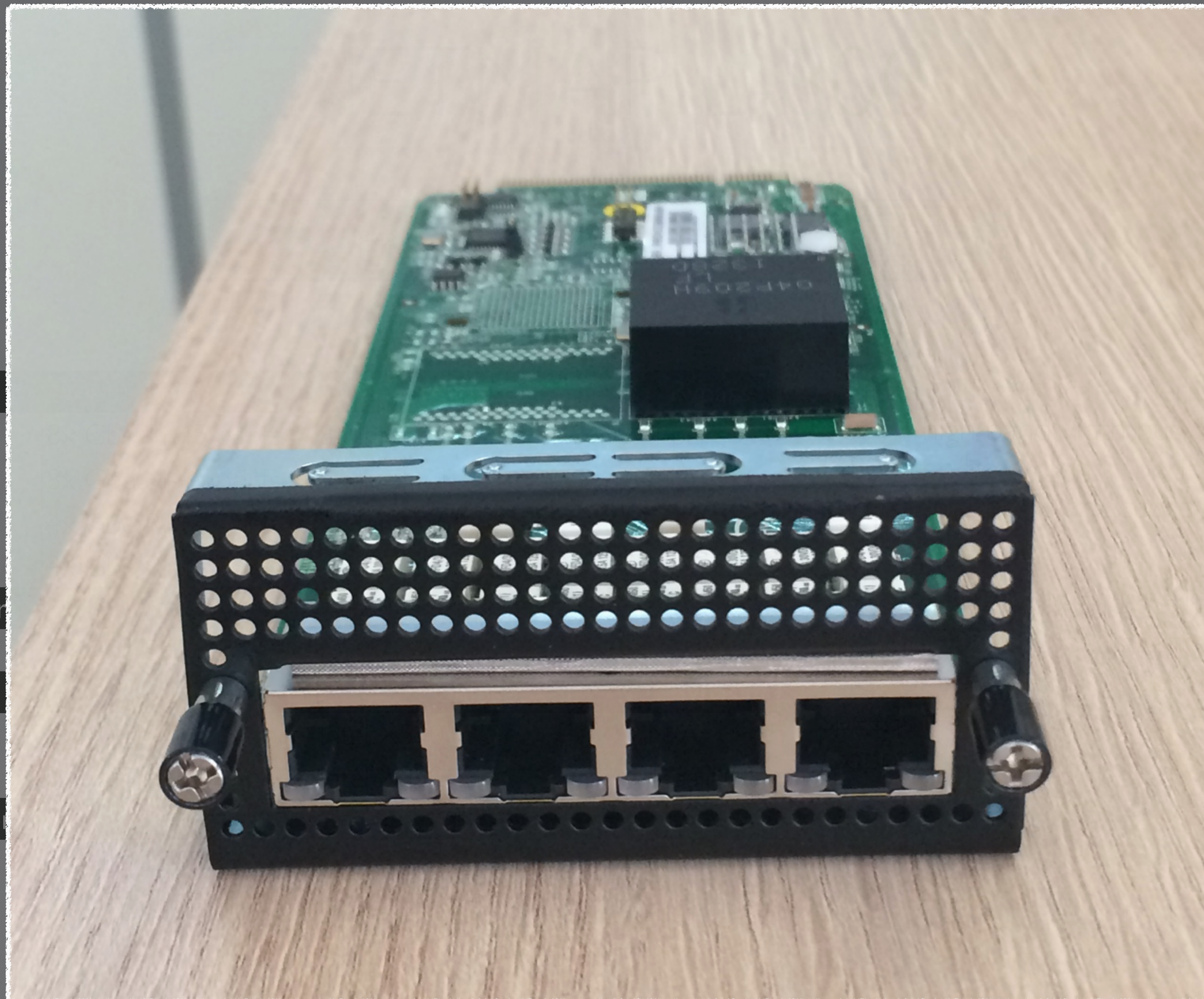
L800-T203-1

10GbE SFP+ (Fiber)

L800-X204-1

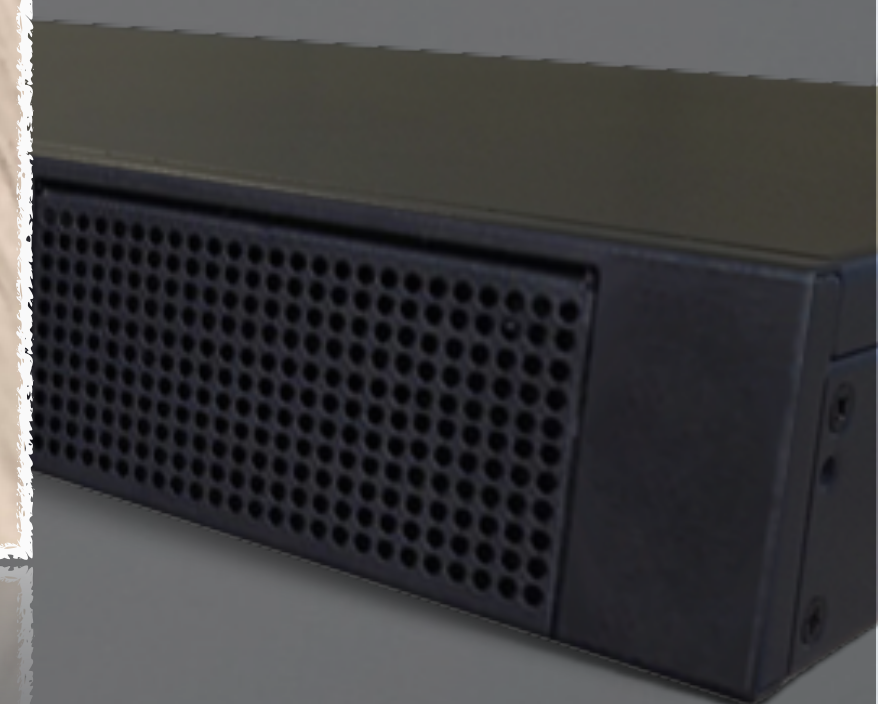
L800-X205-1

L800-X405-1



on NIC expansion
erverU Netmap
mance, bandwidth
g to your needs

swapped modules
ed expansion for
per, bypass and
(SFP, SFP+ and



NETMAP L-800



- ServerU Netmap L-800 is designed, engineered, tested and enhanced for *free software* operating systems based on BSD and Linux
- BSD and Linux are fully supported, chipsets are handpicked to offer best performance, reliability and advanced technologies on these platforms
- Exclusive BSD and Linux technologies such as Netmap & PF_RING are fully tested on L800



NETMAP L-800



NETMAP L-800



more in:

<http://www.serveru.us/en/netmapl800>

NETMAP L-800



ServerU